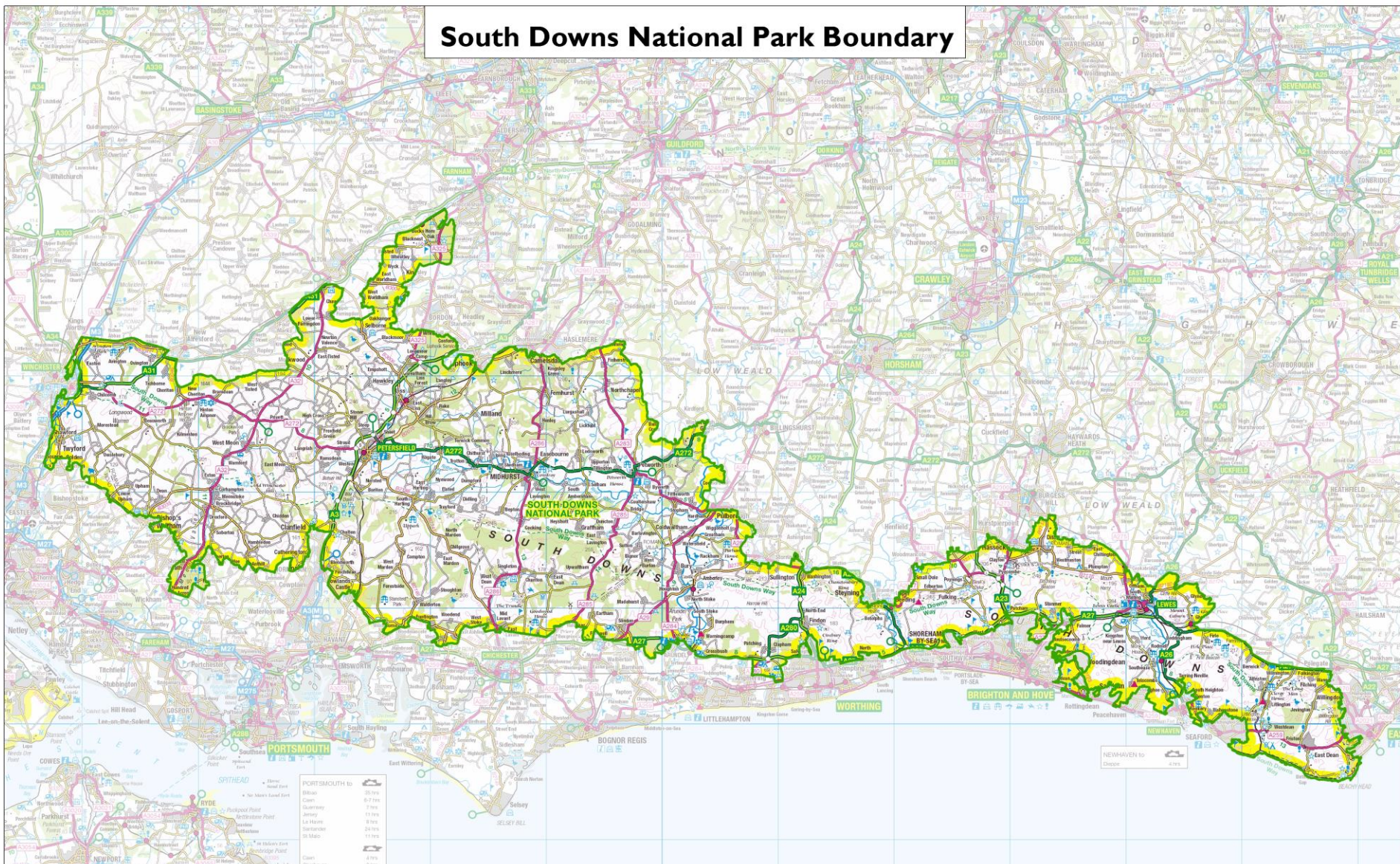


South Downs National Park Funding

Miriam Swan – Grants Officer



South Downs National Park Boundary



South Downs National Park Trust

Registered Charity Number 1174975

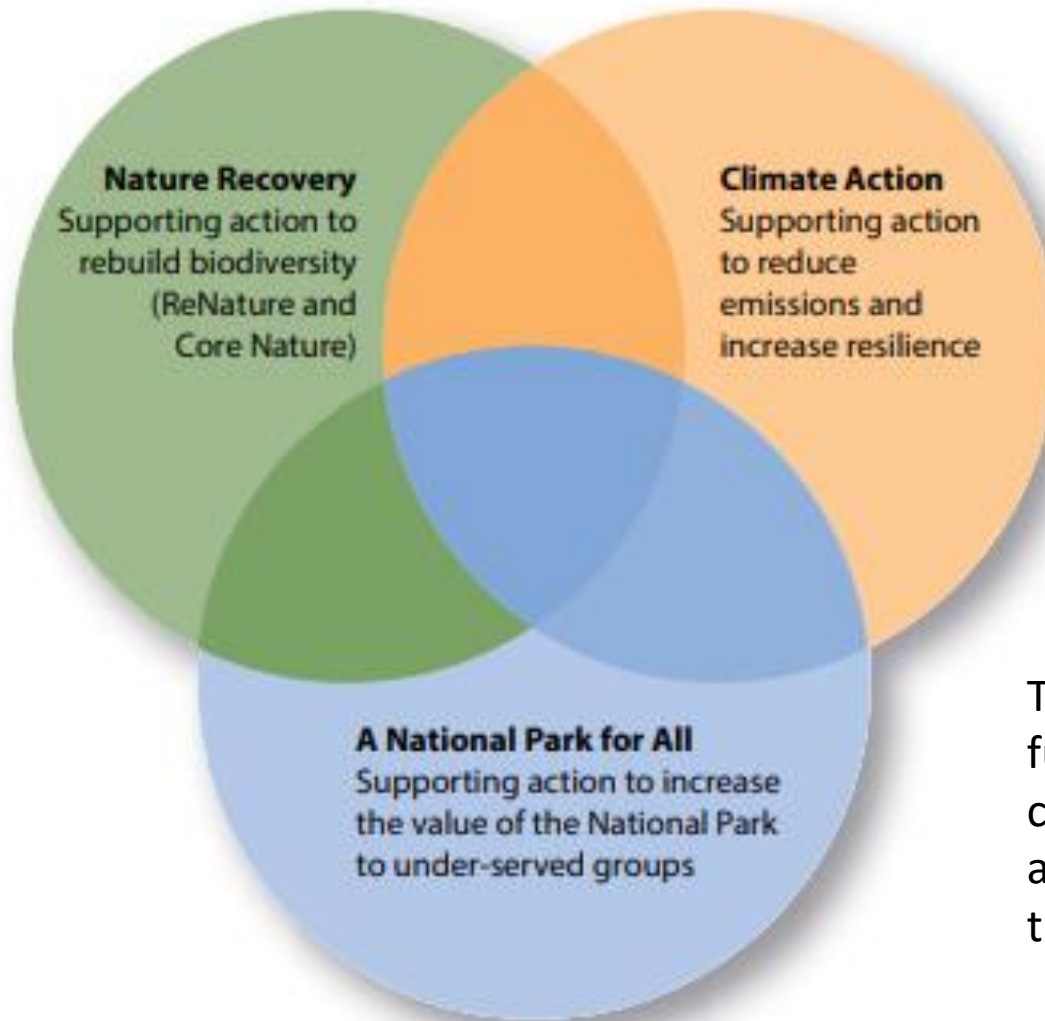
SOUTH DOWNS
NATIONAL PARK TRUST

- South Downs National Park Authority's funding doesn't stretch to cover all of the important work needed to protect and enhance the National Park.
- The Trust is the independent, official charity of the South Downs National Park
- The Trust raises money to help deliver Park Authority's aims

Priorities:

- Increase learning time outside in the National Park. Particularly getting young people outside.
- Improve our grassland, heathland and woodland
- Help for communities volunteering to support their National Park
- Improving walking and cycling routes





To be prioritised for grant funding, all projects should have a community benefit and applicants are asked to contribute themselves.



Nature Recovery – ReNature,
Pounds for Ponds, Trees for the
Downs, Beelines, CIL

A National Park for All – Youth
Action Fund, Outdoor Learning
Grants, Volunteer Conservation
Fund, litter picking grants, CIL

Climate Action – Trees for the
Downs, Sustainable Communities
Fund, Community Pitch (Ouse
Valley), Ouse Valley Climate Action



**More homes for barn
owls in the Ouse Valley**

Volunteer Conservation Fund grant
to Sussex Barn Owl Study Group





c Friends of
Easebourne Parish



c Daniel Hargreaves

SOUTH DOWNS
NATIONAL PARK TRUST



c Petersfield Community Garden



c Gregory Ade



Expert advice, SDNPA Rangers

SOUTH DOWNS
NATIONAL PARK TRUST

Area Rangers can advise and support local community nature recovery and National Park access projects.

Many of our grant funds suggest their input.

The Grants Officer can help you link to a Ranger
[Rangers - South Downs National Park Authority](#)

We also work with Plantlife and other experts to develop projects that are funded



Current Opportunities:

- **Trees for the Downs** Open to 31st May
- **Youth Action Fund** Open until 24 June
- **Outdoor Learning grants** On a first-come-first-served basis

Coming up:

- **ReNature grants**
- **Sustainable Communities Fund**
- **Community Pitch (Ouse Valley Climate Action project area)**



What makes a good application?

- Clear links to the outcomes in the Partnership Management Plan
- Highlighting how the National Park's special qualities enhance your project or how your work will contribute to these qualities
- A budget that breaks down your estimated costs in detail and tells us how it will be funded.
- Details of your beneficiaries and how outcomes are measured at the end
- Contributions – cash and/or in –kind

....and a common mistake is to....

....apply solely because your project is within the National Park. Instead, consider how what you will do contributes to the park. What it is about the South Downs that delivers something special you wouldn't find elsewhere?



Contact us



Miriam Swan

Grants@southdowns.gov.uk



Mob: 07471997344



South Downs Centre, North Street, Midhurst, West Sussex, GU29 9LU



www.southdowns.gov.uk/scf

www.southdownstrust.org.uk/scf

