

# **sussexinterpreting**services



**[sussexinterpreting.org.uk](https://sussexinterpreting.org.uk)**

Please contact us with any questions or for a chat about accessibility and language support  
Projects Manager [Vikki@sussexinterpreting.org.uk](mailto:Vikki@sussexinterpreting.org.uk)

1

## **INTERPRETING**

<https://sussexinterpreting.org.uk/guidelines/>



**Face to Face, Telephone or Video**

**Professional and trained interpreters**

**Information is;  
accurate , correct, culturally appropriate**

**Everything is private and confidential**

**Overcome barriers ;  
Language, culture, knowledge, trauma, power**

2

# SOCIAL PRESCRIBING



sussexinterpretingservices

<https://sussexinterpreting.org.uk/social-prescribing/>



Practical, Social, Emotional Support

Lived Experience Volunteers and Caseworkers

Culturally appropriate signposting and facilitated referrals

Member of the, Social Prescribing Plus and UOk Partnership

3

# TRANSLATION



sussexinterpretingservices

<https://sussexinterpreting.org.uk/translation/>

MANDARIN

This short language appointment sheet has been produced by Sussex Interpreting Services to help service users with a language need of their appointment details. Please click the relevant language and search for the services. You will receive email or text messages and QR codes. [www.sussexinterpreting.org.uk](http://www.sussexinterpreting.org.uk)

Dear 尊敬的:

The contact information is as follows: 您的联系信息如下:

I would like to make an appointment with you 我想与您预约一个预约

For 为: GP 全科医生, Dentist 牙科, Midwifery 助产士, Health Visiting 社区卫生, Mental Health 心理健康, Legal 法律, Social Care 社会护理, Housing 住房, Immigration 移民

at 在: This address 此地址

Your home address 您的家庭地址

Day 星期	Monday 星期一	Tuesday 星期二	Wednesday 星期三	Thursday 星期四
1	2	3	4	5
6	7	8	9	10
11	12	13	14	15
16	17	18	19	20
21	22	23	24	25
26	27	28	29	30
31				

January 一月, February 二月, March 三月, April 四月, May 五月, June 六月, July 七月, August 八月, September 九月, October 十月, November 十一月, December 十二月

We will try to provide an interpreter 我们将尽力提供一名翻译

It is important that you keep this appointment. If you are unable to attend please contact us on: 01323 415100. 很重要，请务必参加这个预约。如果您无法参加，请联系我们：01323 415100。

Telephone / 电话: 01323 415100  
and ask for / 请找: 11



আপনি আসলেই কেমন বোধ করছেন?

আপনি কি অকিঞ্চত হয়ে পড়েছেন এবং সামান্যত কষ্ট হচ্ছে?

আপনার জন্য উপযুক্ত মানসিক স্বাস্থ্য এবং সুস্থতা সহায়তা বুজুন।

আমাদের কবেকপাইট খোঁজে আসুন কখন।

English version

[how-are-you-really-feeling-sussex.nhs.uk](http://how-are-you-really-feeling-sussex.nhs.uk)

SIS Translated Resource Libraries

24 languages

[sussexinterpreting.org.uk/service-users/](https://sussexinterpreting.org.uk/service-users/)

Letters

Leaflets, Flyers, Posters

Service Information

Forms

Reports

4

# COMMUNITY RESEARCH & ENGAGEMENT

<https://sussexinterpreting.org.uk/community-research/>



Part of the Research Engagement Network

Giving Service Users a VOICE

Health Education England trained Bilingual Community Researchers

Culturally Rooted, activity based, engagement methods

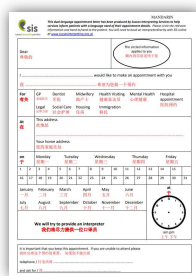
Community Voices Group

5

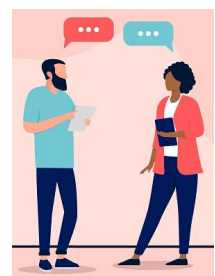
## Free SIS accessibility resources



Translated appointment letters  
[sussexinterpreting.org.uk/bilingual-appointment-letters/](https://sussexinterpreting.org.uk/bilingual-appointment-letters/)



Volunteer Bilingual Social Prescribers  
[sussexinterpreting.org.uk/social-prescribing/](https://sussexinterpreting.org.uk/social-prescribing/)



Translated self-referral cards  
[sussexinterpreting.org.uk/languagecards/](https://sussexinterpreting.org.uk/languagecards/)



Translated resource libraries  
<https://sussexinterpreting.org.uk/translated-resource-libraries/>

6

# Additional steps

Consultancy Services [sussexinterpreting.org.uk/consultancy-services/](https://sussexinterpreting.org.uk/consultancy-services/)

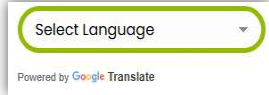


**СОЦІАЛЬНІ ПЕРЕКЛАДАЧІ**  
Вони можуть забезпечити неупереджений, точний і конфіденційний усний переклад на ваших зустрічах у соціальних службах та закладах охорони здоров'я

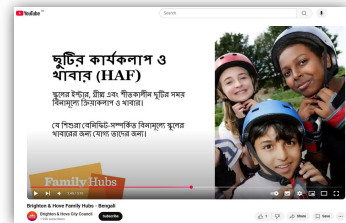
**У МЕНЕ ПРИЗНАЧЕНА ЗУСТРІЧ, І МЕНІ ПОТРІБЕН СОЦІАЛЬНИЙ ПЕРЕКЛАДАЧ**

Translate information [sussexinterpreting.org.uk/translation/](https://sussexinterpreting.org.uk/translation/)

Embed a translation tool on your website



Use an SMS platform that supports translated information



Use a telephone interpreter for communicating around appointments [sussexinterpreting.org.uk/telephone-interpreting/](https://sussexinterpreting.org.uk/telephone-interpreting/)



SIS Health Promotion service [sussexinterpreting.org.uk/health-promotion/](https://sussexinterpreting.org.uk/health-promotion/)

**[sussexinterpreting.org.uk](https://sussexinterpreting.org.uk)**

Please contact us with any questions, or for a chat about accessibility and language support  
Projects Manager [Vikki@sussexinterpreting.org.uk](mailto:Vikki@sussexinterpreting.org.uk)